



Project Update

June 2016

Greentown-Reynolds Project ■ 801 E. 86th Ave. ■ Merrillville, IN 46410 ■ 1-888-449-2101 ■ www.greentownreynolds.com

As part of our effort to keep the public, elected officials and community leaders informed, we wanted to provide the following update as we move into the construction phase of the Greentown-Reynolds Transmission Line Project.

Project Partnership: The Greentown-Reynolds project is a collaborative effort between Northern Indiana Public Service Company (NIPSCO) and Pioneer Transmission – a joint venture formed by American Electric Power (AEP) and Duke Energy to build and operate transmission lines and other related facilities in Indiana.

Construction: While activity began in April along the right-of-way, such as surveying, staking and some mobilization of equipment, actual construction started in May, beginning with the tower foundations. Work began in White County and will move along the route toward Howard County. Construction activities include:

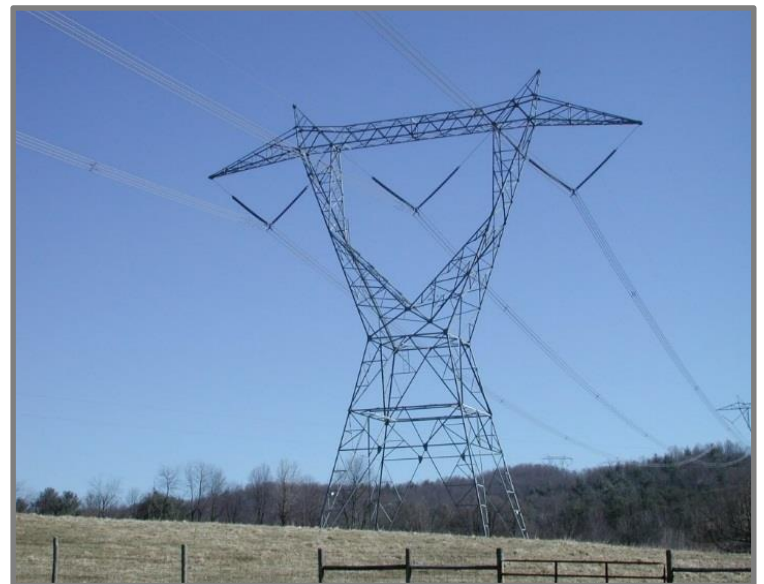
- Notification to property owners
- Informational meetings with county officials
- Obtaining permits
- ROW staking, clearing and soil erosion control
- Construction of access roads and equipment mobilization
- Material storage and delivery
- Foundation and transmission tower construction
- Stringing of electric wires
- Property restoration

Public Safety During Construction: As with any construction project, the public should expect to see the delivery of construction material and equipment, construction vehicles and occasional lane closures near the delivery and staging area. The project team will work closely with county officials regarding construction traffic and travel restrictions. Public safety comes first in completing our work.



Greentown Laydown Yard: The picture above shows the material laydown yard located at the Greentown substation. Approximately 18.5 million pounds of steel and 1,261 miles of conductor will be used for this project.

Schedule: Construction work is scheduled for completion by mid 2018.



Facts

- New ~70 mile 765 kV electric transmission line from Greentown to Reynolds, Indiana
- 200-foot-wide right-of-way
- Typical steel lattice structure height of 135 feet
- Average 1,250 feet between structures

Benefits

- Improved reliability of the electric transmission system
- Increased construction-related jobs and purchasing of services, goods and materials in the project area
- Increased access to regional sources of competitively priced power

Questions: Contact Erin Whitehead, NIPSCO Public Affairs Manager, at 317-965-8334 or ewhitehead@nisource.com